

Ping June 24 West



June 24: West blocks

Layer name	Acquisition time	Center	Area	Page
NDVI	02/06/2024 10:20:01 BST Duration: 00:54:36	51.0934390, -1.1848241 (WGS84)	12.728 ha	2
Powdery Mildew Index	02/06/2024 10:20:01 BST Duration: 00:54:36	51.0934390, -1.1848241 (WGS84)	12.728 ha	3-6
ReCI chlorophyll leaf content	02/06/2024 10:20:01 BST Duration: 00:54:36	51.0934390, -1.1848241 (WGS84)	12.728 ha	7-10
Sat NDMI	25/05/2024 13:17:03 BST	51.0934095, -1.1847748 (WGS84)	13.095 ha	11

NDVI

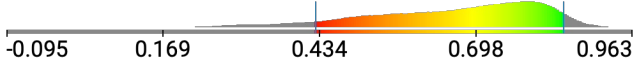
Index



Layer details

Acquisition	02/06/2024 10:20:01 BST Duration: 00:54:36
Center	51.0934390, -1.1848241 (WGS84)
Area	~12.728 ha
GSD	2.715 cm/px
Bands	1 (Gray)

Histogram and Legend



Visualization settings

Histogram equalization: On
Selected minimum value: 0.427
Selected maximum value: 0.846
Values out of range: Transparent

Statistics

Layer area: 12.728 ha
Mean index: 0.673
Index SD: 0.137
Mean index (visible): 0.681
Index SD (visible): 0.110

Powdery Mildew Index

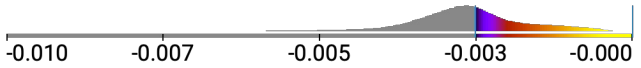
Index



Layer details

Acquisition	02/06/2024 10:20:01 BST Duration: 00:54:36
Center	51.0934390, -1.1848241 (WGS84)
Area	~12.728 ha
GSD	2.715 cm/px
Bands	1 (Gray)

Histogram and Legend



Visualization settings

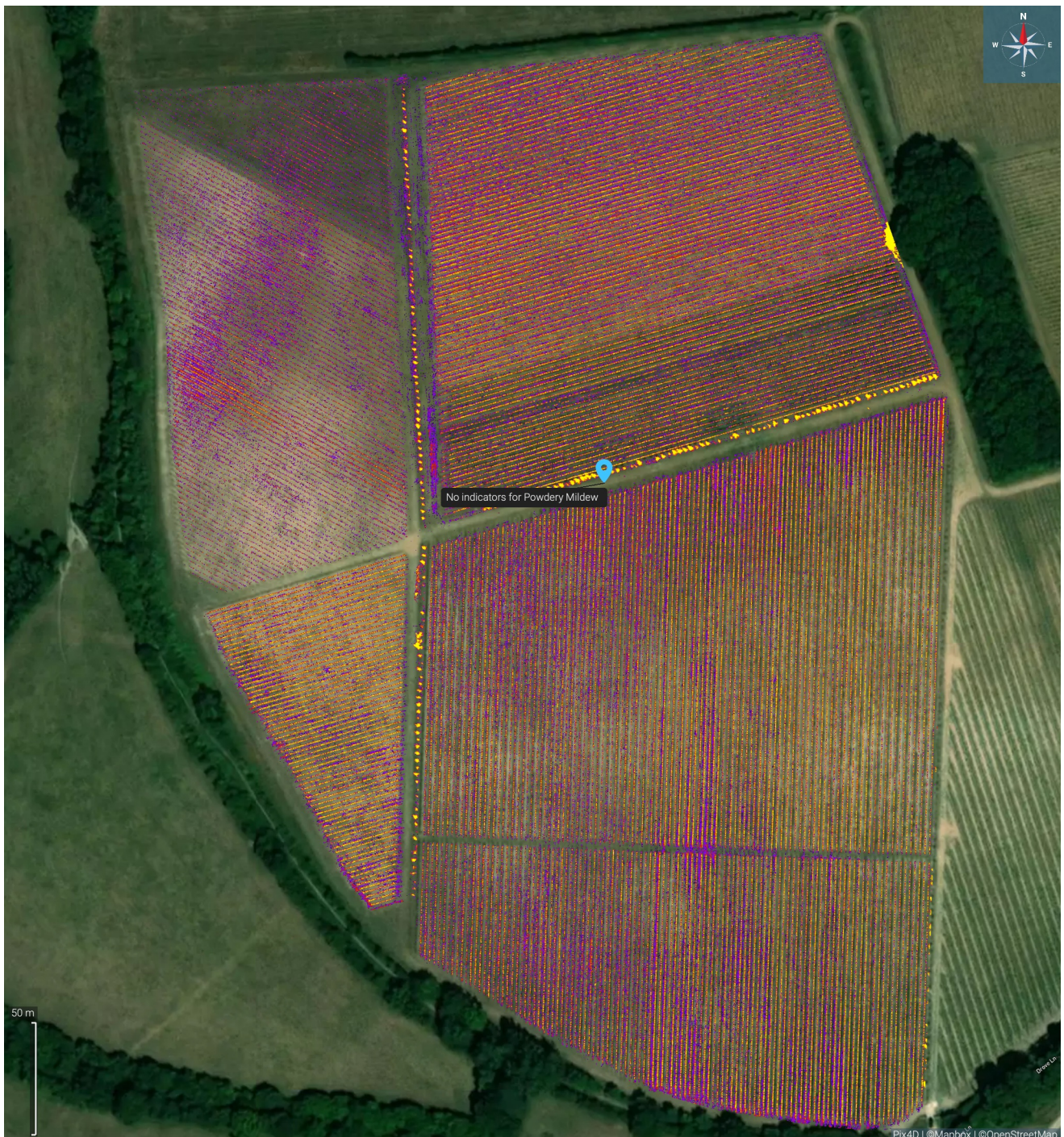
Histogram equalization: On
Selected minimum value: -0.003
Selected maximum value: -0.000
Values out of range: Transparent

Statistics

Layer area: 12.728 ha
Mean index: -0.003
Index SD: 0.001
Mean index (visible): -0.002
Index SD (visible): 0.001

Powdery Mildew Index


with 1 annotation



Powdery Mildew Index

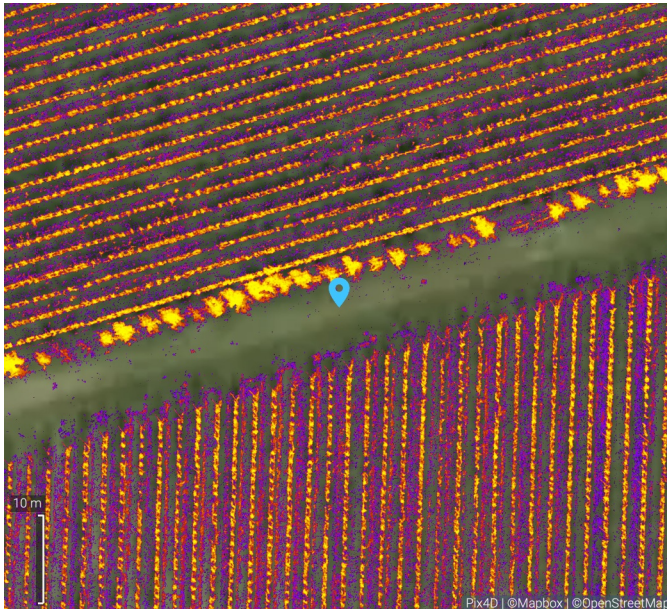
Annotations



Name	Type	Position, length or area	Description	Attachm.	Color
No indicators for Powdery Mild...	● Point	51.0937883, -1.1843840	-	-	 Blue

Powdery Mildew Index

Annotations



Name: No indicators for Powdery Mildew

Location: 51.0937883, -1.1843840

Index value: -0.003

ReCI chlorophyll leaf content

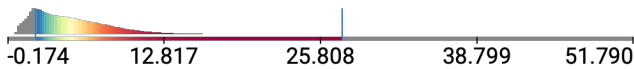
Index



Layer details

Acquisition	02/06/2024 10:20:01 BST Duration: 00:54:36
Center	51.0934390, -1.1848241 (WGS84)
Area	~12.728 ha
GSD	2.715 cm/px
Bands	1 (Gray)

Histogram and Legend



Visualization settings

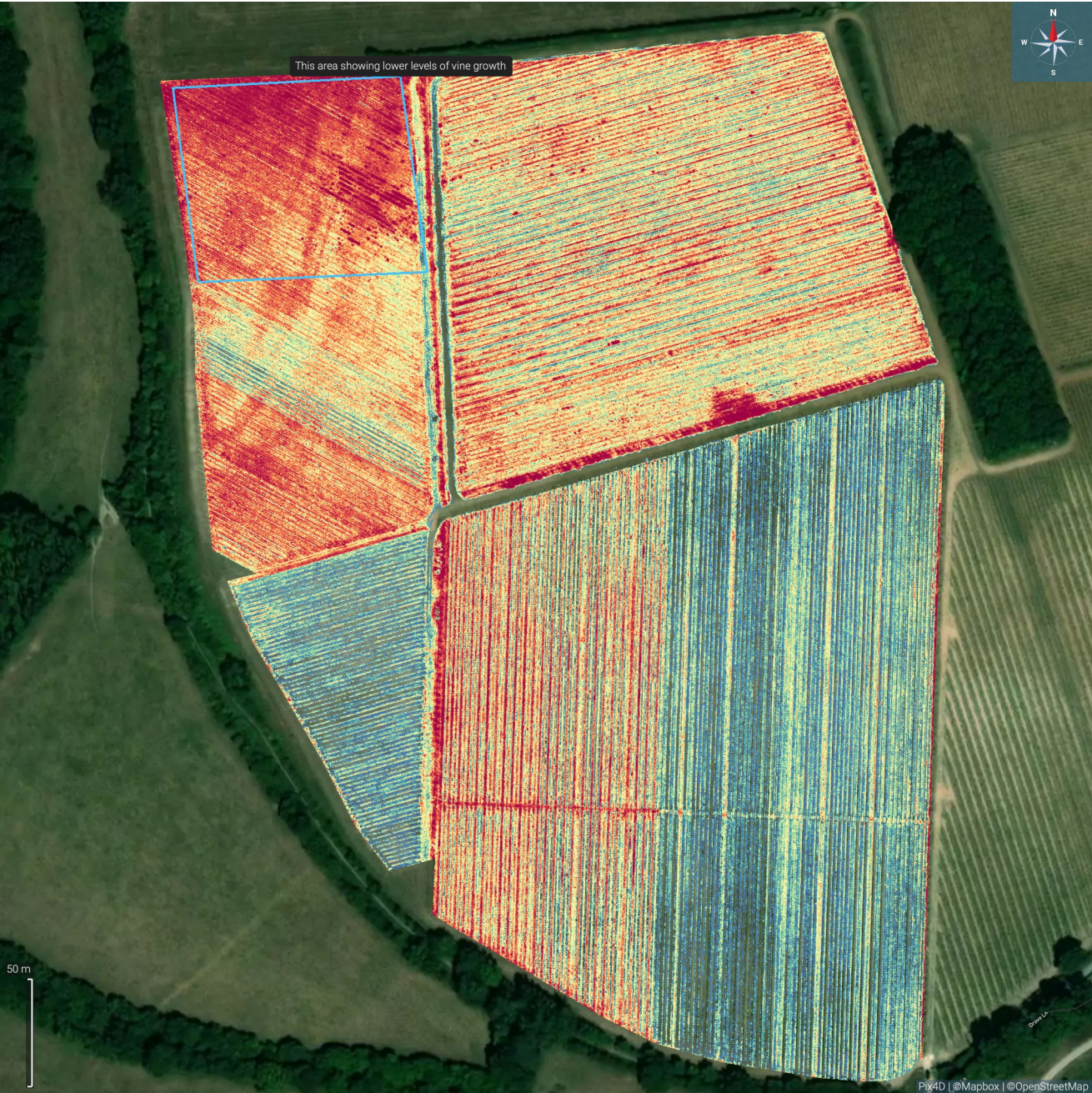
Histogram equalization: On
Selected minimum value: 2.184
Selected maximum value: 27.585
Values out of range: Transparent

Statistics

Layer area: 12.728 ha
Mean index: 5.312
Index SD: 3.184
Mean index (visible): 6.003
Index SD (visible): 2.978

ReCI chlorophyll leaf content

with 1 annotation






All area annotations	0.898 ha
----------------------	----------

ReCI chlorophyll leaf content

Annotations

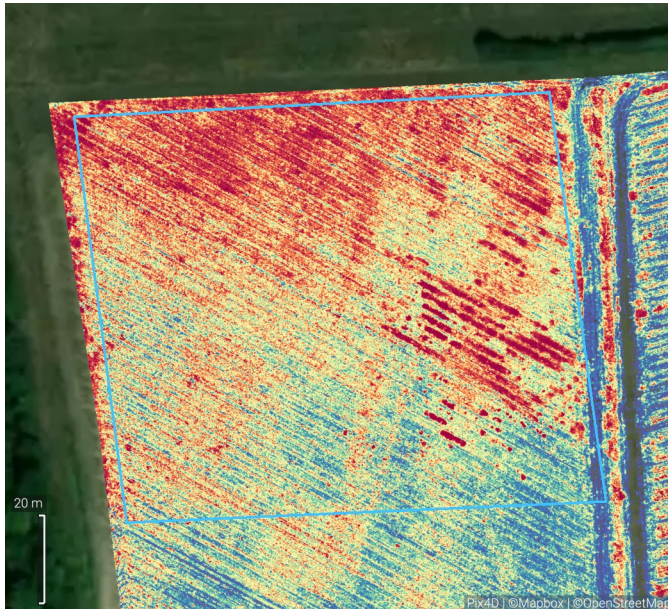


Name	Type	Position, length or area	Description	Attachm.	Color
This area showing lower	 Area	0.898 ha	I think this might be newer planting? Kn...	-	 Blue

Area annotations	Area
 Blue	0.898 ha

ReCI chlorophyll leaf content

Annotations



Name: This area showing lower levels of vine growth

Area: 0.898 ha

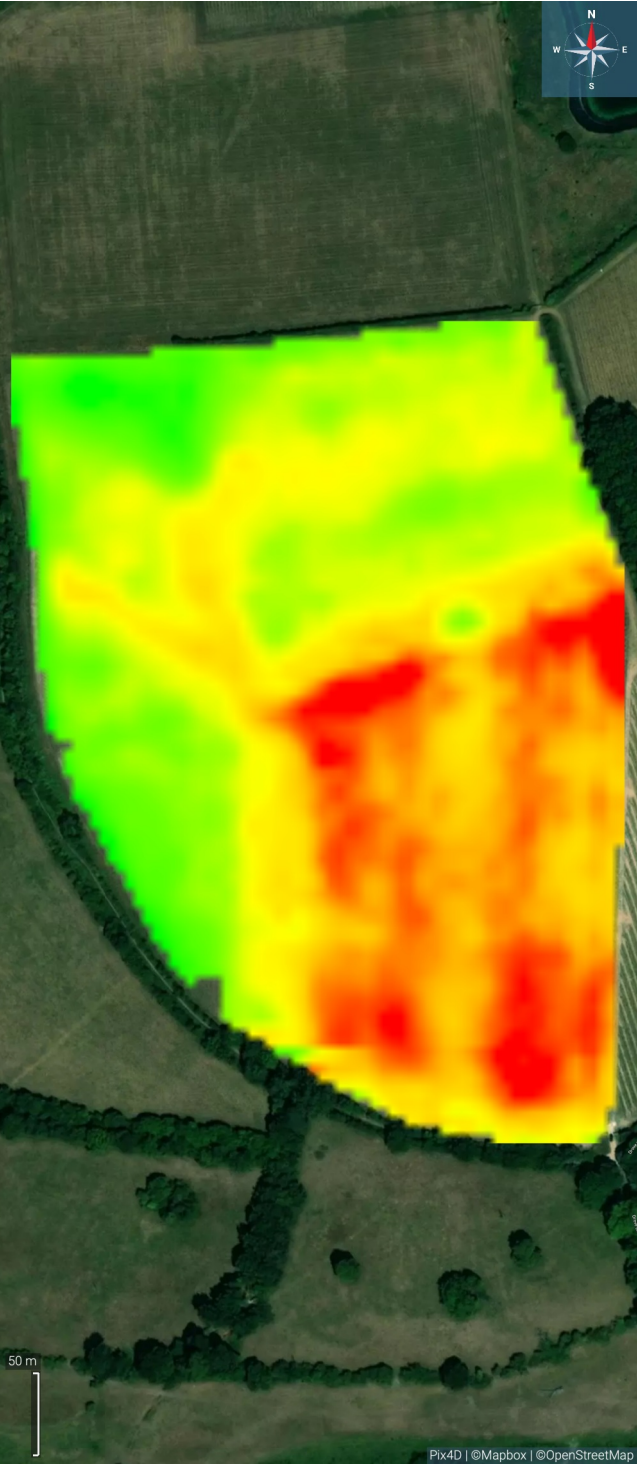
Mean index: 8.913 (SD: 2.874)

Mean index (visible): 8.931 (SD: 2.854)

I think this might be newer planting? Known area from last season

Sat NDMI

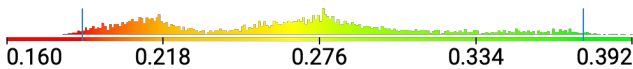
Index



Layer details

Acquisition	25/05/2024 13:17:03 BST
Center	51.0934095, -1.1847748 (WGS84)
Area	~13.095 ha
GSD	501.629 cm/px
Bands	1 (Gray)

Histogram and Legend



Visualization settings

Histogram equalization: On
Selected minimum value: 0.188
Selected maximum value: 0.374
Values out of range: Solid

Statistics

Layer area: 13.095 ha
Mean index: 0.255
Index SD: 0.046
Mean index (visible): 0.256
Index SD (visible): 0.043